



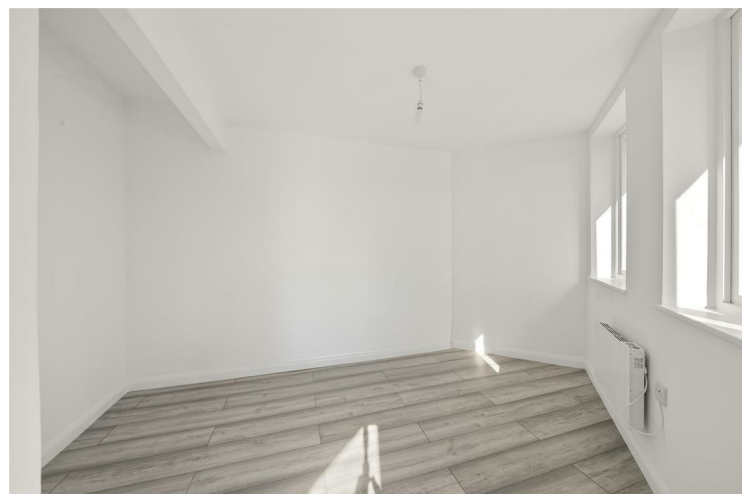
Tarrant House Christchurch Road Virginia Water

£289,950

Leasehold

A SELECTION OF JUST FOUR NEWLY CONVERTED STUDIO FLATS

Nestled on Christchurch Road in the charming area of Virginia Water, these newly converted flats offer a delightful living experience. This property is part of a development featuring four generously sized studio flats, each designed with modern living in mind.



Upon entering, you will find a well appointed open plan kitchen, complete with integrated appliances, perfect for those who enjoy cooking and entertaining. The layout maximises space, creating a warm and inviting atmosphere that is both functional and stylish.

The flat comprises of a comfortable bedroom area and a well designed bathroom, ensuring all your essential needs are met. The property is conveniently located within walking distance of Virginia Water Train Station, making it an ideal choice for commuters or those who enjoy easy access to nearby towns and cities.

Additionally, the flat benefits from underground parking, providing a secure and convenient solution for vehicle storage. This property is perfect for individuals or couples seeking a modern, low maintenance lifestyle in a desirable location.

With its blend of contemporary design and practicality, these flats would be a wonderful opportunity for anyone looking to make Virginia Water their home.





Christchurch Road, Virginia Water

Approximate Gross Internal Area
415 sq ft / 38.6 sq m



Not to Scale. Produced by © Vizion Property Marketing 2025
For Illustrative Purposes Only.



| Energy Efficiency Rating | | |
|---|-------------------------|-----------|
| | Current | Potential |
| Very energy efficient - lower running costs | | |
| (92 plus) A | | |
| (81-91) B | | |
| (69-80) C | 72 | 72 |
| (55-68) D | | |
| (39-54) E | | |
| (21-38) F | | |
| (1-20) G | | |
| Not energy efficient - higher running costs | | |
| England & Wales | | |
| | EU Directive 2002/91/EC | |

Agents Note: Whilst every care has been taken to prepare these particulars, they are for guidance purposes only. All measurements are approximate and are for general guidance purposes only and whilst every care has been taken to ensure their accuracy, they should not be relied upon and potential buyers/tenants are advised to recheck the measurements

Heston
131A Heston Road
Hounslow
TW5 0RF

020 8059 0595
shiv@aksestates.co.uk
aksestates.co.uk

